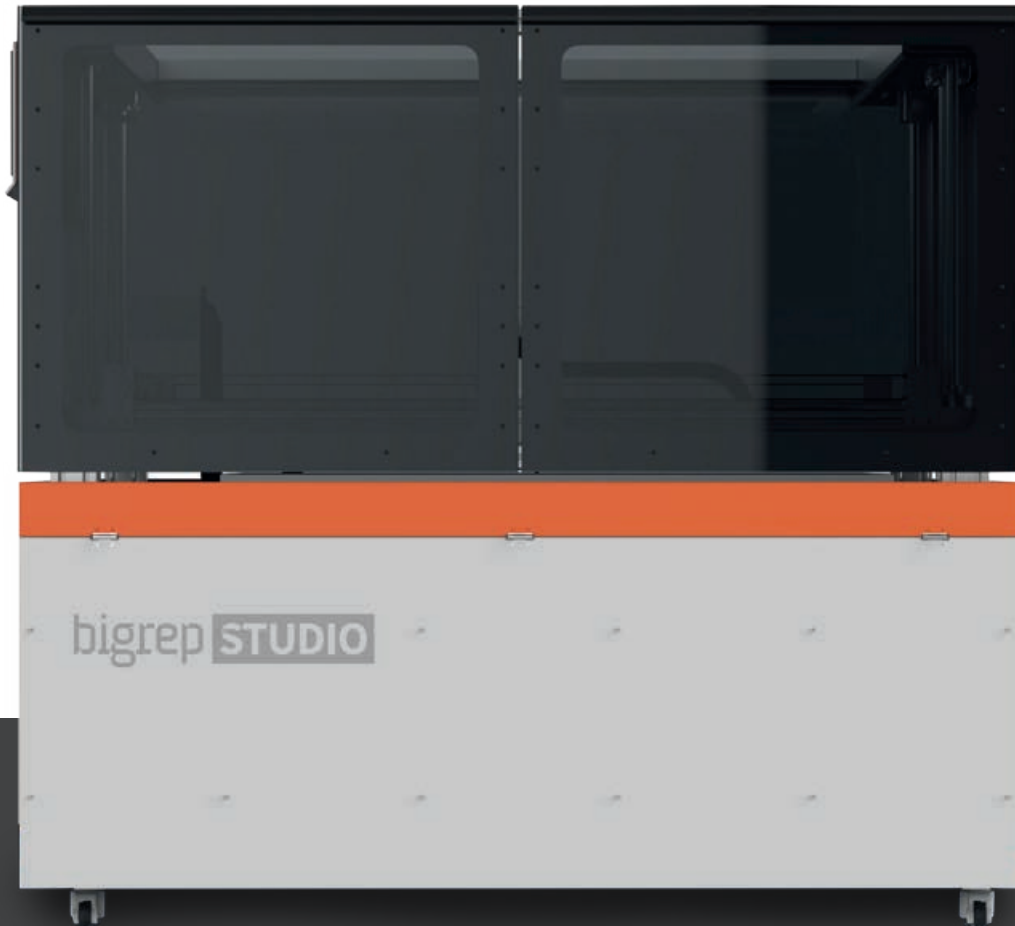


bigrep **STUDIO**

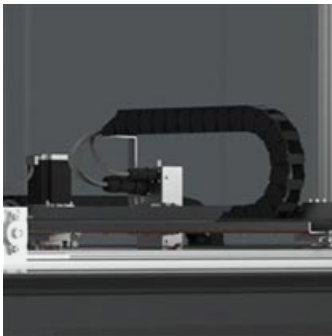


AFFORDABLE 3D PRINTING AT **LARGE SCALE** WITH **SPEED & PRECISION**

With the BigRep Studio, we introduce a new dimension of large-scale 3D printing. The print volume of 500mm x 1000mm x 500mm provides space for large objects, while also enabling high precision and faster printing. The size of the BigRep Studio is optimal for setting up the printer in almost every location.

bigrep.com

The direct-drive extruders with 0.6mm nozzles are optimized for both speed and precision, capable of printing flexible materials. The all-metal hot-end allows the printing of a larger variety of high temperature filaments.



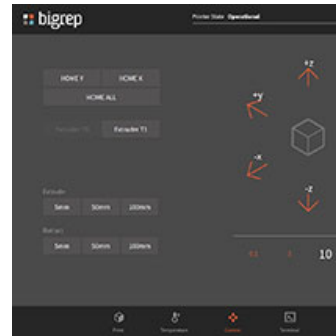
FAST & ACCURATE
THE NEW DUAL EXTRUDER

Print conventional materials, BigRep high temperature filaments as well as new flexible materials with speed & precision.



QUICK & SIMPLE SETUP
THE COMPACT SIZE

The all new BigRep Studio fits through a standard office door by disassembling the two halves of the machine, or through a standard industrial door fully assembled. Its reduced weight allows for easier transport and installation.



INTUITIVE
THE USER INTERFACE

New intuitive user interface on multi touch enabled screen, enabling lots of new features as remote load and check print progress via webcam, resume print after power failure and many more.



ERGONOMIC & SAFE
THE DESIGN CONCEPT

The print bed is raised for an ergonomic working height, at the same time creating filament storage space. Closed side-wall housing for increased safety in educational environments, filament guides inside the machine and fully opening sliding doors for best access to the print bed.

TECH SPECS AT A GLANCE

Build volume	x 500 y 1000 z 500 (mm)
Layer resolution	100 - 400 microns
Print speed	Up to 140 mm/s at 0.1mm layer height
Acceleration	Up to 1000 mm/s²
Extruder	Dual extruder equipped with 0.6mm nozzles
Printing technology	FFF - Fused-Filament-Fabrication (FDM)
Certified materials	BigRep PLA, BigRep Pro HT, BigRep PETG, flexible materials to be released soon
Size	x 1022 y 1660 z 1500 (mm)
Weight	Approx. 250kg



bigrep.com • Smart Solutions for Big Ideas.

BigRep GmbH • Gneisenaustraße 66 • 10961 Berlin • Germany • Phone +49 30 20 84 82 60 • office@bigrep.com